

STUDENT HANDBOOK 2026



kids in
2024

Ecologist
Astronomer
Doctor
Builder
Conservationist



Country Universities Centre SNOWY MONARO

WELCOME

The CUC Snowy Monaro (CUCSM) team are pleased to welcome you. We believe the future of an aspiring student should not be determined by where they live so we have provided you with a space and resources to help you achieve your goals.

We acknowledge the generous support of the Australian Government who fund CUCSM as part of Regional University Study Hubs program. The Program aims to improve access to tertiary education for regional and remote students.

The Australian Government provide CUCSM with further funding under the Regional Partnerships Project Pool Program (RPPPP). This Program aims to support collaborative outreach projects that enable the higher education aspirations of students in regional and remote Australia, including those who may be experiencing cumulative disadvantage. For more information about how we are achieving this, please look for our Common Ground program information on the CUC Snowy Monaro website.

Also recognising the importance of tertiary education for regional students, CUCSM receives generous funding from the NSW Government and are supported by Snowy Monaro Regional Council.



Australian Government
Department of Education



20
25

12 YEARS
SUPPORTING OUR
LOCAL STUDENTS

850 
STUDENTS
over 12 years

450 
UNIVERSITY
COURSES
have been studied by our students

& 114 OTHER
COURSES

3.2%

ABORIGINAL OR
TORRES STRAIT
STUDENTS

CUC SNOWY
MONARO 

Cooma has 2.8% people identifying as
Aboriginal or Torres Strait Islander (ABS)

174 students did not provide this
information

267 students were
FIRST IN FAMILY
TO STUDY AT UNI

2013 - 2025

A further 162 students did not provide this information

Our students
have studied

with **47** DIFFERENT
UNIVERSITIES

& **56** OTHER
PROVIDERS

OUR TEAM



NADINE HOLLAND
CENTRE MANAGER

nadine.holland@cucsnowymonaro.edu.au
0437 344 620



BRONTE TOZER
CENTRE COORDINATOR

bronte.tozer@cucsnowymonaro.edu.au
0447 837 166

Student Engagement Officers

JASMIN STATHAM-SMITH

DANIEL SHIRVINGTON

ALEX MILLIKEN

BEC TAYLOR

OUR BOARD

CAROLYN EWART
CHAIR, LIFE MEMBER

DARREN DAVIS
DEPUTY CHAIR

FRANCES ROBERTSON
SECRETARY

IAIN ELLIOT
TREASURER

NARELLE DAVIS
DIRECTOR

KERRIE HARIS
DIRECTOR

ERIN MISKELLY
DIRECTOR

KATHLEEN MATTHEWS
DIRECTOR

OUR CENTRE

CUC Snowy Monaro is a clean, and well equipped Study Centre that:

- Allows student access between 5am – 2am
- Is open for registered student access every day of the year
- Is a safe space with CCTV and security lighting
- Has a quiet open plan group study area as well as private study spaces
- Has dual screened communal computers
- Provides free and fast WIFI
- Allows free printing, scanning and photocopying of study related materials
- Has teleconferencing facilities
- Provides exam services including room bookings and exam supervisors
- Has academic and administrative support services for students
- Kitchen that stocks free hot drinks and snacks
- Provides plenty of off-street parking

The guest WIFI password is located in each room

REGISTRATION

All students who use CUC Snowy Monaro's facilities and/or services must register as a student. General data collected during the registration process will be used by CUCSM when reporting to our funders, applying for further support or for promotional purposes. No personal information will be shared without prior consent.

You must be a current student with a higher educational institution to register. We welcome any adult student who are studying any course, through any provider and for any period of time.

Students under the age of 18 years are welcome, however, do have restricted access to the Centre. These restrictions will be discussed upon your registration and can also be found in the student policies.



STUDENT SUPPORT

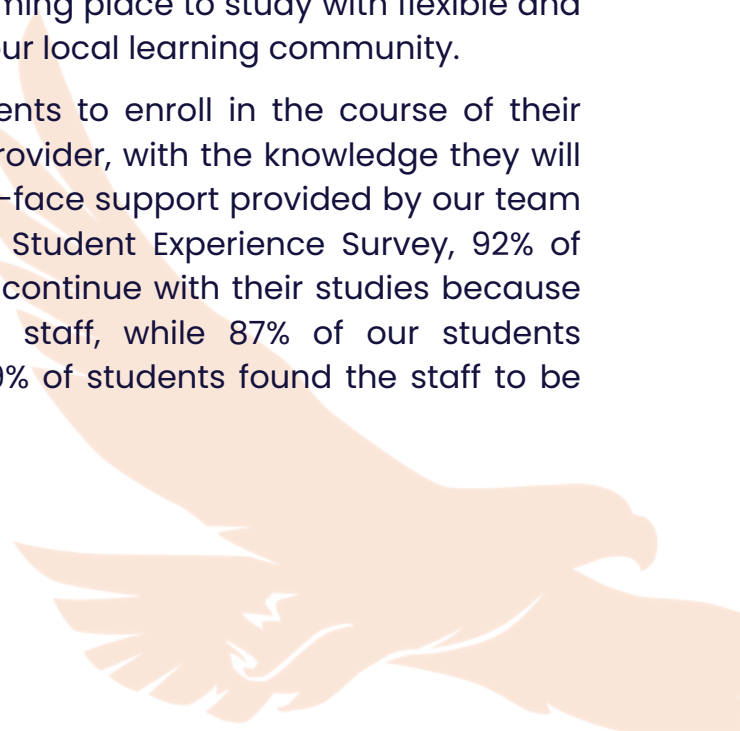


Our students choose to study a diverse range of courses from over 40 different Australian universities and many other education or training providers. We even have a small number of international students who have moved to our Region to be a part of the Snowy Hydro 2.0 Scheme.

CUC Snowy Monaro (CUCSM) has responded to our local student needs and established an innovative model that can support any student studying any course through any educational or training provider. The wrap-around model for student support provides face-to-face academic, well-being, technological, and administrative support in addition to what each student's university already provides. These extra layers of support are crucial for many students who study with us.

Regional and online students, often from low SES backgrounds or being the first in their family to pursue higher education, face higher attrition risks. This is compounded by caring responsibilities they may have. We aim to overcome these barriers by offering a free and welcoming place to study with flexible and personalised face-to-face support within our local learning community.

Our Study Centre aims to empower students to enroll in the course of their choice from any educational or training provider, with the knowledge they will be supported locally. The focus on face-to-face support provided by our team is highly valued by students. In the 2022 Student Experience Survey, 92% of students indicated they are more likely to continue with their studies because of the help they received from CUCSM staff, while 87% of our students experienced a sense of belonging, and 99% of students found the staff to be very or extremely helpful.



OUR NETWORK

CUC Snowy Monaro is part of a well-established Country Universities Centre (CUC) network. This network provides local solutions across Eastern Australia.

Successful regional development is led by local communities and aligned with regional strengths. The Country Universities Centre (CUC) model is designed and developed by regional people for regional people and their communities to provide equitable access to education. It is both a grassroots and agile model.

Each Centre is owned, governed, and driven by its local community through an independent Board of Directors. This framework provides for place-based learning solutions. Each CUC can respond quickly to the unique higher education challenges and needs of local communities.



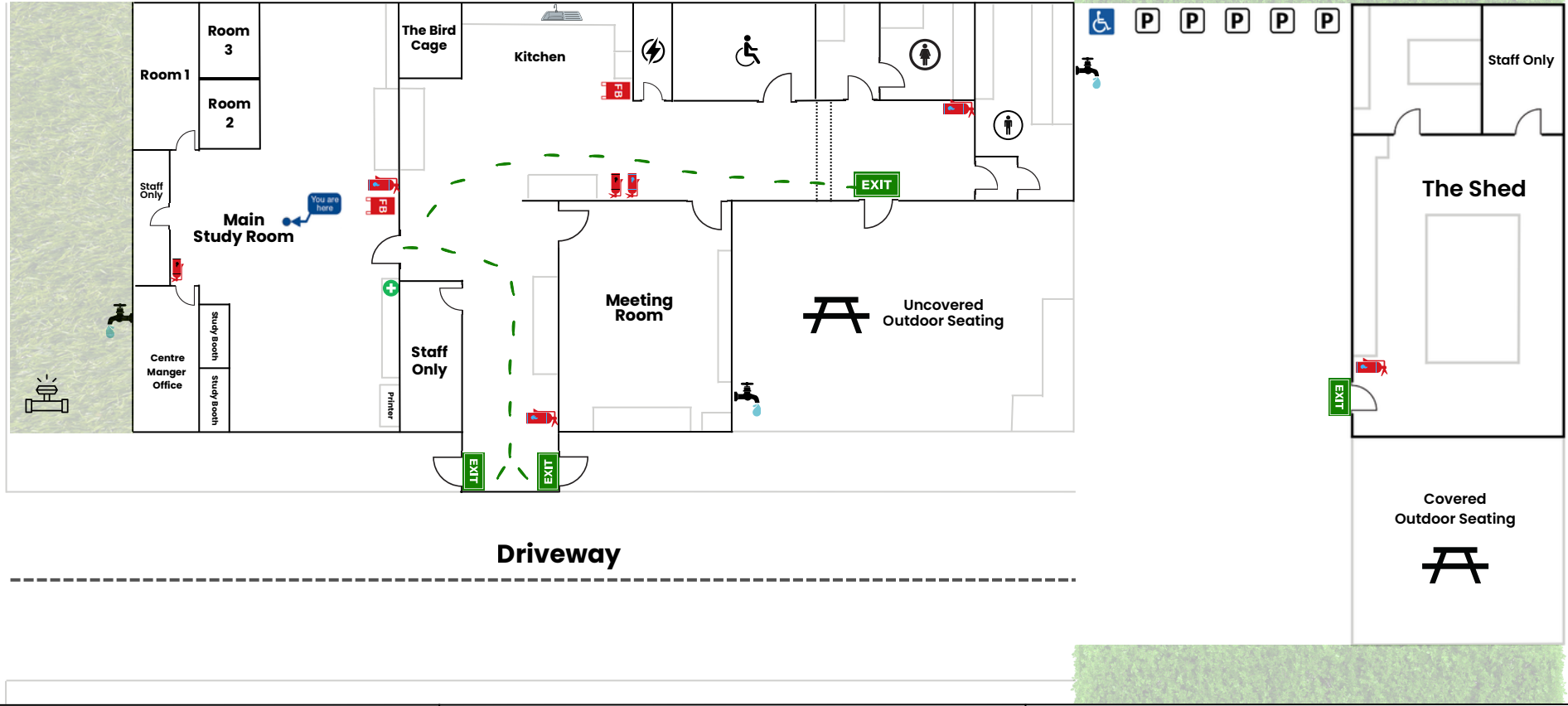


EVACUATION DIAGRAM

CUC Snowy Monaro
38 Bombala Street, Cooma NSW 2630
Access street: Bombala Street
Nearest cross street: Commissioner Street



Bombala Street



Key

Contacts

Procedure

	First Aid		Exit Door		Parking		Outdoor Water
	Disability Parking		Your Location		Outdoor Seating		Electrical Room
	Fire Blanket		Dry Powder Extinguisher		Co2 Extinguisher		Assembly Area
	Water Main		Exit Route				

Emergency Services	000
Cooma Hospital	6455 3222
Cooma Fire Station	6453 4763
Cooma Police Station	6452 0099
Centre Manager	0437 344 620

- Follow staff instructions
- Outside of business hours, alert present personnel and evacuate immediately through the closest, safest exit
- Call 000
- Go to the assembly area and wait for emergency services & further instructions

CONTACT



38 Bombala Street, Cooma NSW 2630



0437 344 620



degrees@cucsnowymonaro.edu.au

MAKE AN APPOINTMENT



Find the link on our website or
SCAN HERE!



BOOK A ROOM



Find the link on our website or
SCAN HERE!



MORE INFORMATION



www.cucsnowymonaro.edu.au



cucsnowymonaro



cucsnowymonaro

