

ROOM BOOKINGS

To enquire to use our facility, please fill out the external room enquiry form on our website.



Country
Universities
Centre

SNOWY MONARO

We begin by acknowledging Ngarigo/Ngarigu Country – an important place to many Aboriginal peoples – the birthplace of rivers.

Country in our (Aboriginal) way of understanding things is more than just the dirt under our feet, although that is an important part of Country too. Country is the landscapes (high country, swamplands, mountains, plains, and deserts), the animals (from the microscopic to the colossal), the vegetation (grasses, trees, bushes, vines, and flowers), the rocks (from pebbles to mineral deposits), the waterways (puddles, rivers, creeks, and oceans), the seasons (many more than just four), the weather (the sunshine, winds, storms, and dry periods), and the stories (the ancient through to the contemporary).

In acknowledging Country we assert our reliance on Mother Earth for all things (shelter, sustenance, and beauty to satisfy the soul). We equally affirm our respect for the Elders (experts in their cultural ways and holders of the knowledge and stories that are embedded in this place), for their enduring custodianship.

Adam Gowen

**Wiradjuri, connections to Yuin Country, culture, and community
Centre Manager, CUC Southern Shoalhaven**

WHO WE ARE

CUC Snowy Monaro is a part of the Country Universities Centre (CUC) network. This network consists of Regional University Study Hubs across NSW, QLD, VIC, TAS and Norfolk Island. Each Centre is locally owned, governed and operated for the benefit of their local community. CUC Snowy Monaro is generously supported by the Regional University Study Hubs (Department of Education, Australian Government), NSW State Government and Snowy Monaro Regional Council.

We support all students studying any course through any provider. Students who register with CUC Snowy Monaro can receive face-to-face academic support, study spaces, exam support, access to high-speed internet and technology, wellbeing, and a local learning community of other students from their communities.

ROOM BOOKINGS

CUC Snowy Monaro offer fee free room bookings to other local, not for profits and charities. The offer is not for ongoing or regular room bookings.

Room bookings are subject to availability and recognise that our students and team members are prioritised over external users. We do not offer room bookings to for-profit organisations.

We offer access to free WIFI with high-speed internet (100 Mbps connection) and large screens that can be connected to your laptop via HDMI (a HDMI cable is provided however users are responsible for bringing connectors that are compatible to their device).



Because this is a fee free arrangement, we ask that you pay for all damages that may occur when you are using our facility

BOOKING A SPACE

To enquire about using our facility, you are encouraged to fill out the external room booking form on our website: <https://www.cucsnowymonaro.edu.au/external-room-booking-enquiries/>

DETAILS WE NEED

- Your contact details
- Contact details of the person responsible on the day of the booking
- Your website
- Date of booking
- Time of booking
- Which space you would like to book
- The total number of people attending
- Will you be using the kitchen facilities in the main building?

For urgent enquiries, please call the Centre Manager on 0437 344 620

USING THE FACILITIES

We ask that our external users respect that our core business is providing a reliable, quiet and safe space for our local students to study. Please use our facility with this in mind.

The car park is provided for CUC Snowy Monaro registered students and team members. **External users are asked to park off-site** (excluding those who have identified ability needs). Please ensure you are familiar with the surrounding parking limits.

Cleaning products and a vacuum is provided in each space for your use. Please leave the space clean and tidy.



AVAILABLE SPACES

The Lecture Room

This space is located in the main building and is suitable for no more than 12 people**. The room is conveniently positioned near all three exit doors, the bathrooms, the kitchen, and the meal space. You are welcome to share these spaces, the fridge, hot drink facilities and dishwasher with the Centre's students and team members.

This space is suitable for groups who are reasonably quiet because the space is located near the main study space where we have our students quietly working.

The lecture room is set up with the following resources:

- 2 Large, wall-mounted whiteboards
- Wall mounted, large screen with external microphone and speakers and HDMI input for connecting your laptop (connectors are not supplied)
- 4 large tables
- Chairs
- Reverse cycle air conditioning
- Electronic blinds
- Power points on each wall

*** Due to space, noise and other distractions that may affect our students, we are unable to provide a space for more people than the number specified for each room above. Please find another location if our spaces are too small for your needs.*



The guest WIFI password is located in each room



The Shed

As the name suggests, this is a Shed that sits at the back of our carpark. We have recently renovated this area and it now provides a great group study/meeting space. The Shed is suitable for no more than 16 people**.

The Shed does NOT have water attached to the building so users must walk across the carpark to the main building to use bathroom facilities (an access card to the main building is hanging by the Shed door). This is usually not a problem, however, when wet, the carpark is muddy and it is messy to move across to use the facilities in the building.

The Shed has a very small kitchenette with a bar fridge and some basic cutlery and plates. Please keep in mind that the water for the kettle must be sourced externally or brought in.

The Shed is set up with the following resources:

- Break out room with teleconferencing capabilities
- Large TV on the back wall in the main room with device connection cables
- Large wall-mounted whiteboard
- 4 large tables
- Chairs
- Reverse cycle air conditioning
- Block out blinds
- Power points on each wall
- Free WIFI



**Covered
Outdoor Seating**



Main Room



Break Out Space

*The guest WIFI password
is located in each room*

OUR TEAM



NADINE HOLLAND
CENTRE MANAGER

nadine.holland@cucsnowymonaro.edu.au
0437 344 620



HAN WORSLEY
EDUCATION COORDINATOR

han.worsley@cucsnowymonaro.edu.au
0472 737 143



BRONTE TOZER
EDUCATION SUPPORT OFFICER

bronte.tozer@cucsnowymonaro.edu.au
0447 837 166

OUR BOARD

CAROLYN EWART
CHAIR, LIFE MEMBER

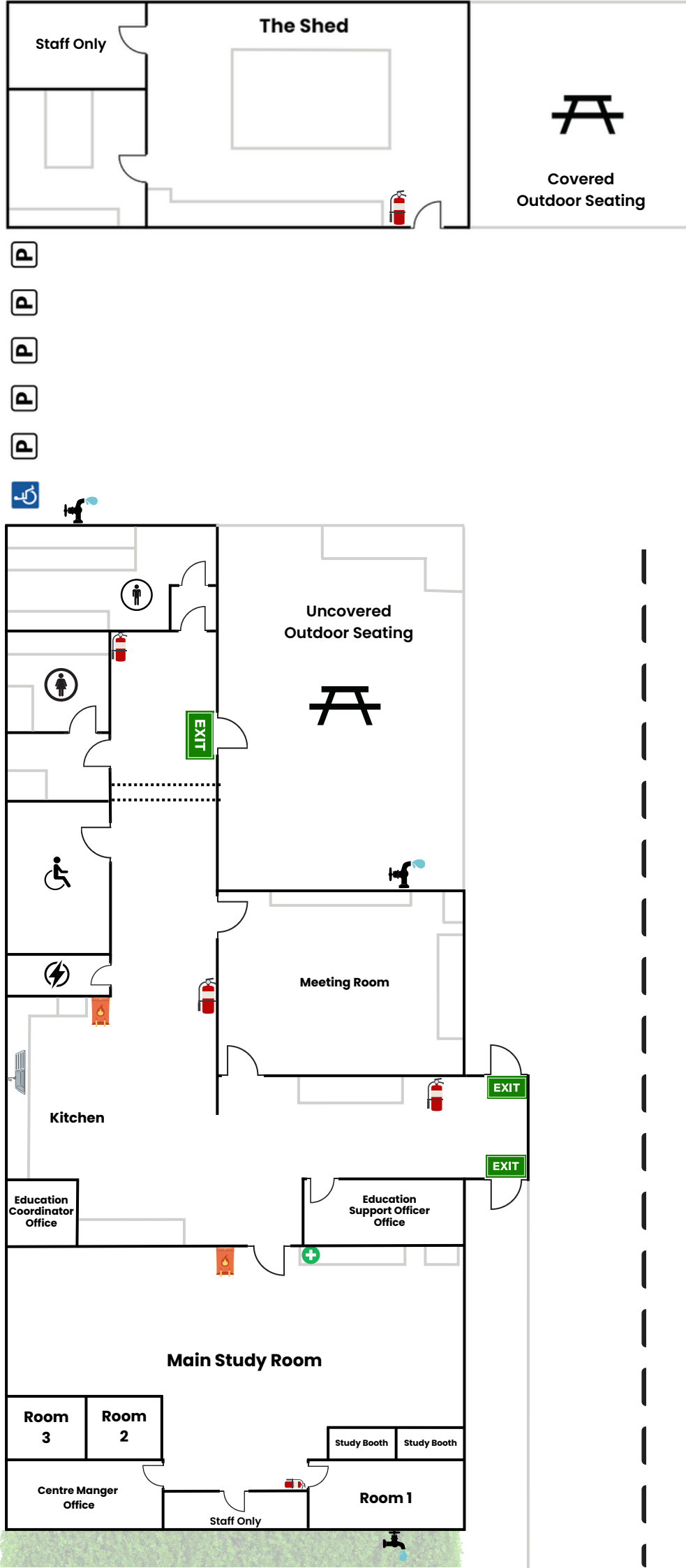
DARREN DAVIS
DEPUTY CHAIR

FRANCES ROBERTSON
SECRETARY

IAIN ELLIOT
TREASURER

NARELLE DAVIS
DIRECTOR

EVACUATION DIAGRAM



- ### Key
- Fire Blanket
 - Fire Extinguisher
 - Outdoor Water
 - First Aid
 - EXIT Exit Door
 - Electrical Room
 - Outdoor Seating
 - Disability Parking
 - Parking

Contacts
Emergency Services
000

Cooma Fire Station
6453 4763

Cooma Hospital
6455 3222

**ASSEMBLY AREA
ACROSS
THE ROAD
(Bombala St)**



live locally **STUDY LOCALLY** work locally

CONTACT

We are generally staffed between 9am–5pm each weekday however, due to our community engagement activities you should not rely on this.

To enquire to use our facility, you are encouraged to contact us via email at:
degrees@cucsnowymonaro.edu.au

For urgent enquiries, please call the Centre Manager on 0437 344 620

MORE INFORMATION



www.cucsnowymonaro.edu.au



CUC Snowy Monaro



cucsnowymonaro



Country
Universities
Centre

SNOWY MONARO